

Ember

Fagotto

Martin Lohse 2008

Allegro moderato

Allegro moderato 1) **A Tempo**

$\text{♩} = 96$

$\text{♩} = 96$

A molto rit.

C

D



2) **Andante cantabile e molto semplice**

$\text{♩} = 76$

E

F

19 rit. App. 5 sec.

Viola



27

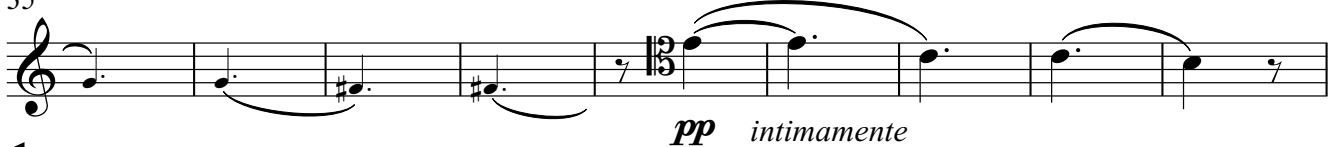
G

Oboe



35

H



44

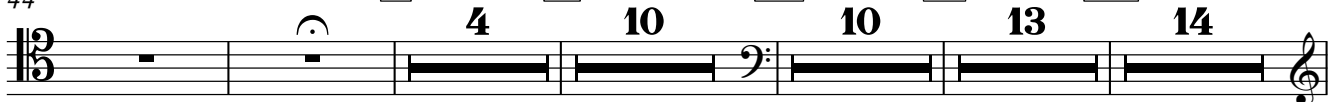
I

J

K

L

M



97

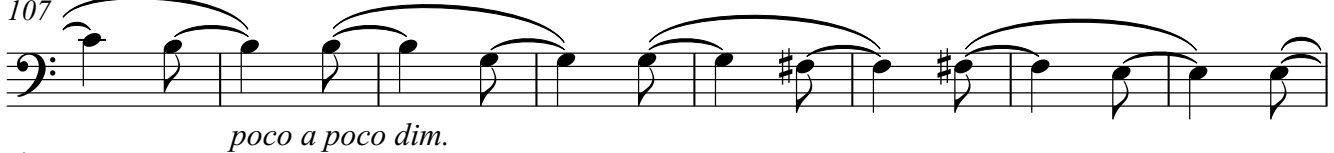
N

Flute



107

O



115

poco rit.



Fine app. 5 min.

- 1) The conductor keeps the tempo bar 13-17 while flute, oboe and clarinet makes a ritardando controlled by the oboe.
- 2) The flute and 1. violin plays in the "tempo" from the start: $\text{♩} = 96-100$, 12/32 in the 1. violin and 9/32 (3♩ + 6♩) in the flute. The music in flute and 1. violin are independent of the rest of the music, and the tempo is controlled by the 1. violin. The conductor controls the main tempo: $\text{♩} = 76$. Its not important that the tempoes are a exact.