

# Concerto in tempi

for accordion and string orchestra

**Allegro non troppo, ma molto appassionato** <sup>1)</sup>

$\text{♩} = 144$  ( $\text{♩} = 72$ )

Martin Lohse 2010/2012

**A** **12** **div.**  $\text{♩} = 144$  ( $\text{♩} = 72$ ) **f espress.** **mf** **f espress.**

**B** **17** **tutti sul pont.** <sup>2)</sup> **Allegro moderato**  $\text{♩} = 96$  ( $\text{♩} = 72$ ) **p**

**C** **20** **Allegro moderato**  $\text{♩} = 96$  ( $\text{♩} = 72$ ) **p**

**D** **23** **Allegro moderato**  $\text{♩} = 96$  ( $\text{♩} = 72$ ) **p** **G.P** **2**

**E** **27** **Allegro moderato**  $\text{♩} = 96$  ( $\text{♩} = 72$ ) **p** **Allegro moderato**  $\text{♩} = 96$  ( $\text{♩} = 72$ ) **p cresc.** **2** **12** **16**

**F** **31** **div. ord.**  $\text{♩} = 144$  ( $\text{♩} = 72$ ) **f espress.** **mf** **f espress.**

**G** **35** **tutti sul pont.!** **Allegro moderato**  $\text{♩} = 96$  ( $\text{♩} = 72$ ) **p**

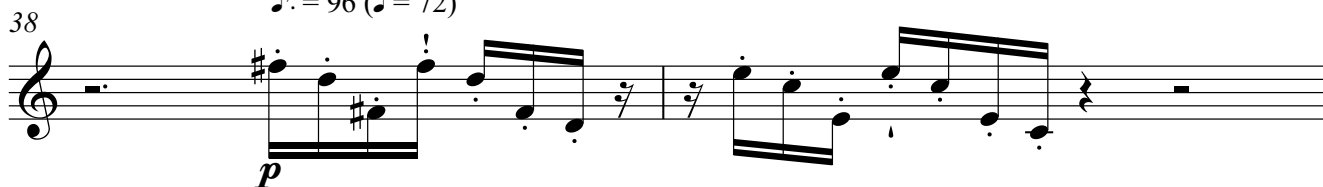
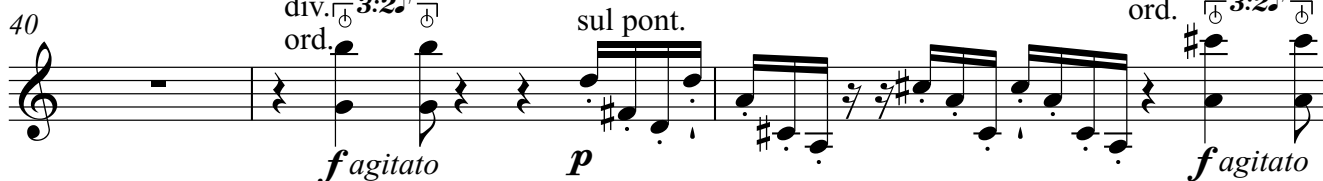
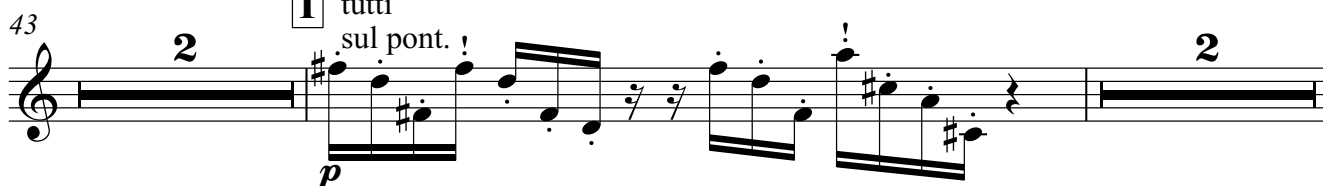
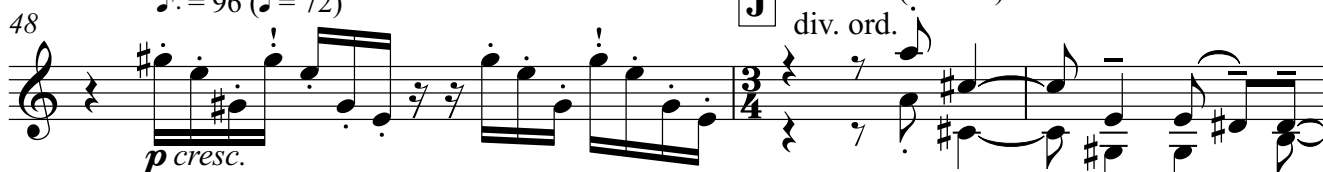
1) The common tempo in the piece is:  $\text{♩} = 72$ , and all the tempoes is derived from this.

2) The wedge over the notes: '!', shows the downbeat in the different tempoes.

Martin Lohse © All rights reserved

**Allegro moderato** $\text{♩} = 96 (\text{♩} = 72)$ 

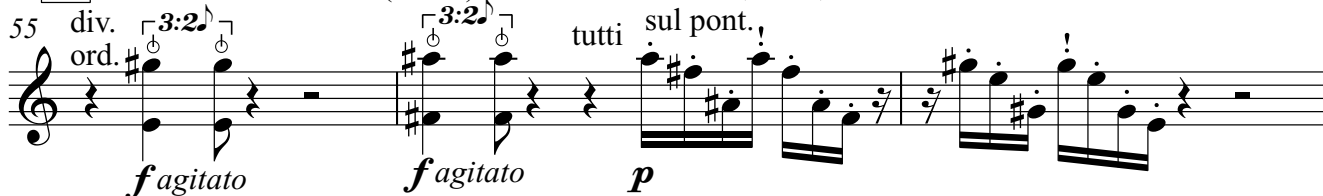
3

**H Presto**  $\text{♩}^{3-} = 216$   
(♩ = 72)div.  $\text{♩}^{3-} 3:2$   
ord.**Allegro moderato**  
 $\text{♩} = 96 (\text{♩} = 72)$ tutti  
sul pont.**Presto**div.  $\text{♩}^{3-} = 216$   
ord.  $\text{♩}^{3-} 3:2$ **Allegro moderato** $\text{♩} = 96 (\text{♩} = 72)$ **I** tutti  
sul pont.**Allegro moderato** $\text{♩} = 96 (\text{♩} = 72)$ **Allegretto molto appassionato** $\text{♩}^{3-} = 72 (\text{♩} = 72)$ **J** div. ord.**Allegro moderato** $\text{♩} = 96 (\text{♩} = 72)$ *mf espress.**mp*

sul pont.

**Allegro moderato** $\text{♩} = 96 (\text{♩} = 72)$ **K****Presto**  $\text{♩}^{3-} = 216$  (♩ = 72)div.  $\text{♩}^{3-} 3:2$   
ord.

tutti sul pont.

**Presto** $\text{♩}^{3-} = 216$ **L**div.  $\text{♩}^{3-} 3:2$   
ord.**Allegro moderato** $\text{♩} = 96 (\text{♩} = 72)$ tutti  
sul pont.**Presto** $\text{♩}^{3-} = 216$ div.  $\text{♩}^{3-} 3:2$   
ord.

**M** Allegro moderato  
 $\text{♩} = 96 (\text{♩} = 72)$ 
**Presto**  $\text{♩}^{3-} = 216 (\text{♩} = 72)$ 

61 **2** tutti sul pont. *p* *f agitato* *f agitato*

**Allegro moderato**  
 $\text{♩} = 96 (\text{♩} = 72)$ 
**Andante semplice**  
 $\text{♩} = 72$ 

66 tutti *p cresc.* *mp*

69 **O**

73 **P** Allegro in moto  $\text{♩} = 144$   
 col legno *p con danzante*

76

78 **Presto**  $\text{♩}^{3-} = 216 (\text{♩} = 72)$  **Q** **4** **R** tutti *f agitato* *f agitato*

84 **Presto**  $\text{♩}^{3-} = 216 (\text{♩} = 72)$  *f agitato* **Allegro in moto**  $\text{♩} = 144$   
 col legno *p con danzante*

87 **S**

89 **Presto**  $\text{♩}^{3-} = 216$  *f agitato*

**Allegro non troppo,  
ma molto appassionato**

91 **T**  $\text{♩} = 96$  ( $\text{♩} = 72$ )

*mf* *f* *mf* *f*

94 **Allegro moderato**  $\text{♩} = 96$  ( $\text{♩} = 72$ )  
sul pont.,

*mf* *p*

97 ord. **U** **Andante maestoso**  $\text{♩} = 72$   
*p poco espress*

*p* *p poco espress*

101 **V** **Allegro moderato**  $\text{♩} = 96$  ( $\text{♩} = 72$ ) **G.P** **W** **Andante maestoso**  $\text{♩} = 72$   
*p poco espress*

*p* *p poco espress*

104 **X** **Allegro moderato**  $\text{♩} = 96$  ( $\text{♩} = 72$ ) **Andante maestoso**  $\text{♩} = 72$   
*p poco espress*

*p* *p poco espress*

107 **Allegro moderato**  $\text{♩} = 96$  ( $\text{♩} = 72$ )  
*p cresc.*

*p cresc.*

109 **Y** **Allegretto molto appassionato**  $\text{♩} = 72$  ( $\text{♩} = 72$ )  
div. *mf espress.* *mp* *mf espress.* tutti

*mf espress.* *mp* *mf espress.* tutti

113 **Allegro moderato**  $\text{♩} = 96$  ( $\text{♩} = 72$ )  
sul pont. *p*

*p*

115 **Z** **Allegro moderato**  $\text{♩} = 96$  ( $\text{♩} = 72$ )  
*p*

*p*

**A1** Andante poco moderato con anima

118 poco rit. 3-5''  $\text{♩} = 72-76$  3) sim.

*mp pp mp pp mp*

**B1**

123

*pp mp pp mp pp*

poco rit. . . .

128

*mp pp mp pp mp*

**C1**

**D1**

Andante semplice

133 4  $\text{♩} = 72$

*pp mp*

**E1**

Andante poco moderato con anima

141 poco rit. 3)  $\text{♩} = 72-76$  sim.

*mp pp mp pp mp*

**F1**

145

*pp mp pp*

**G1**

poco rit. . . . . 3-5''

148

*pp mp pp mp pp*

3) The bracket shows the time signature in the voice. (3/4 in vn I, vc and cb and 4/4 in vn II and va)

**H1** Andante semplice **I1**

151 ♩ = 72

*p poco espress.*



156 **J1** Andante semplice

rit. - - - - - ♩ = 60

*p*



161 **K1** rit. - - - - -

**Fine** app. 11 min.